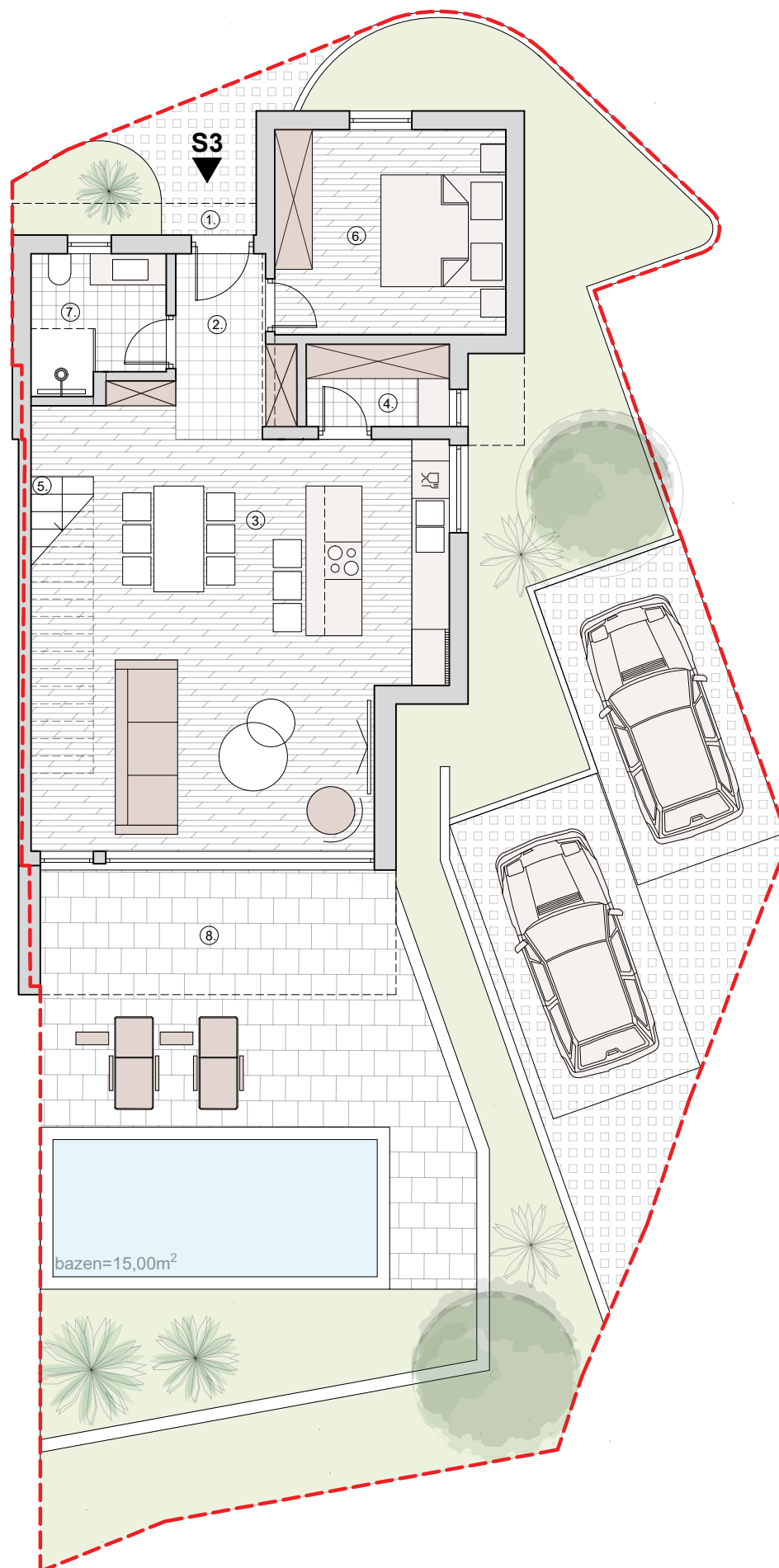
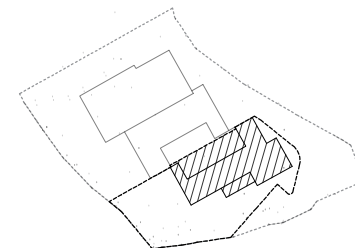


S3

prizemlje



- 1. ulaz (natkriven)**
2,00m²x0,5=1,00m²
- 2. ulazni prostor**
5,06m²
- 3. kuhinja+blagovaonica+
dnevni boravak**
42,72m²
- 4. spremište**
3,03m²
- 5. stubište**
4,83m²x0,75=3,62m²
- 6. spavaća soba 1**
12,17m²
- 7. kupaonica 1**
4,50m²
- 5. terasa 1 (natkrivena)**
12,14m²x0,75=6,07m²

UKUPNO PRIZEMLJE: 78,17 m²

0

2

4

10

