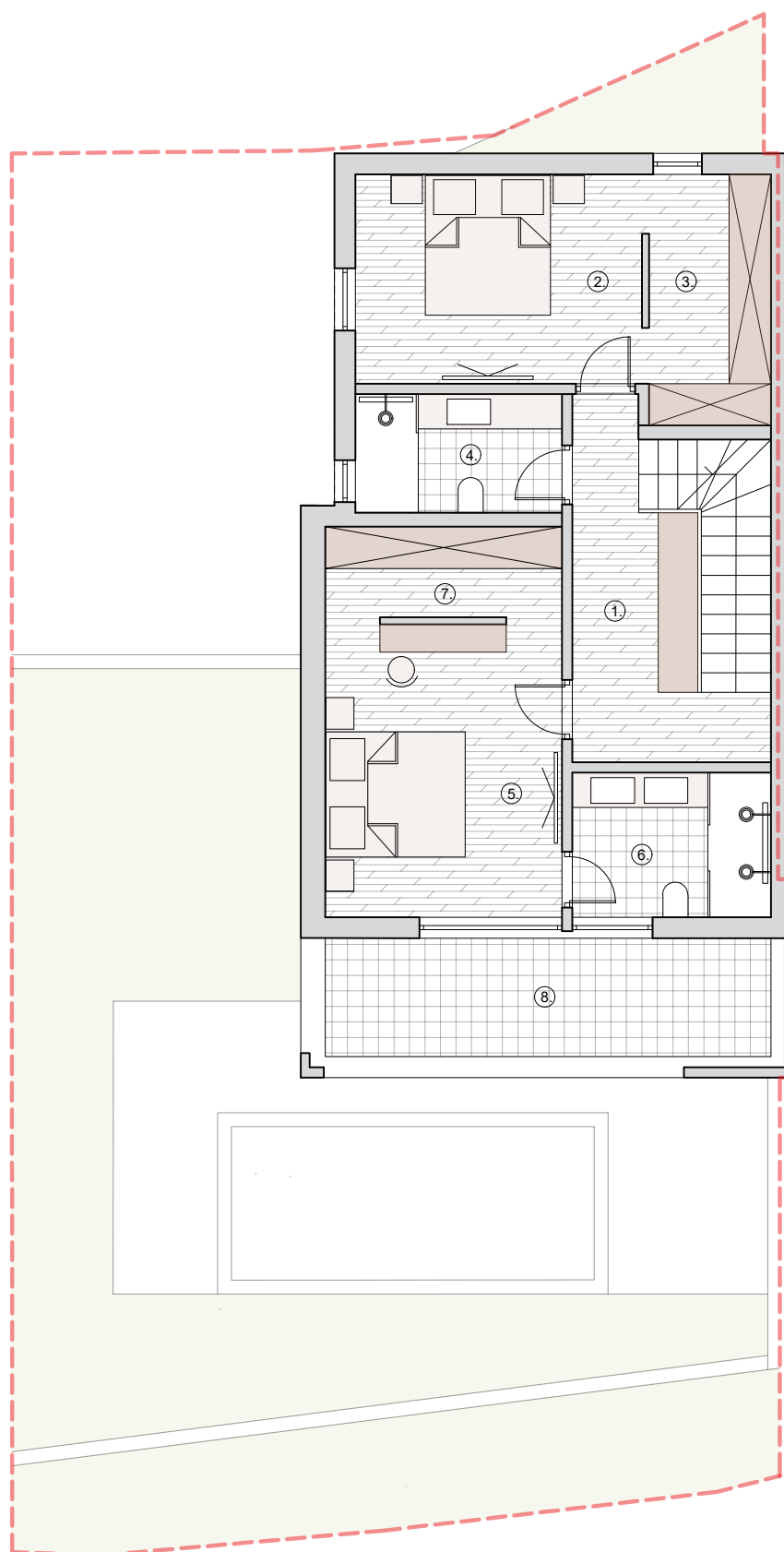
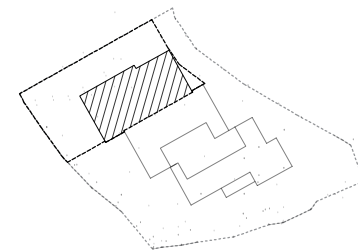


S1

1.kat



1. hodnik
9,27 m²
2. spavaća soba 2
12,33m²
3. garderoba (spavaće sobe 2)
6,30m²
4. kupaonica 2
5,03m²
5. spavaća soba 3
14,26m²
6. kupaonica (spavaće sobe 3)
5,90m²
7. garderoba (spavaće sobe 3)
4,41m²
8. terasa (natkrivena)
12,60m²x0,5=6,30m²

UKUPNO 1. KAT: 63,80 m²

UKUPNO STAN S1 (sa terasama): 137,06 m²

bazen: 15,00m²x1,00=15,00 m²

dvorište: 79,32m²x0,1=7,93m²

parking: 32,35m²x0,25=8,09m²

SVEUKUPNO STAN S1: 168,08 m²

CIJENA: 540.000,00 €

0

2

4

10

