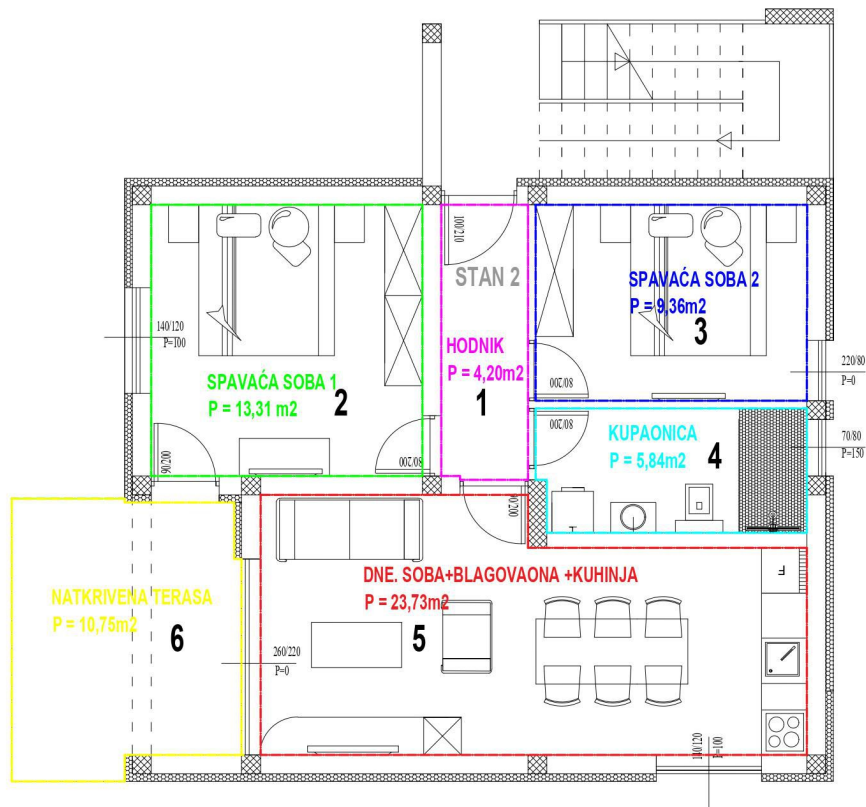
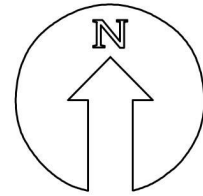


TLOCRT 1. KATA - STAN 2

MJ 1:100



1. KAT - STAN 2

| BROJ | NAZIV | POVRŠINA (m2) | KOEFICIJENT | POV x KOEF. |
|------|----------------------|-----------------|-------------|-----------------|
| 1 | Hodnik | 4,20 | 1,0 | 4,20 |
| 2 | Spavaća soba 1 | 13,31 | 1,0 | 13,31 |
| 3 | Spavaća soba 2 | 9,36 | 1,0 | 9,36 |
| 4 | Kupaonica | 5,84 | 1,0 | 5,84 |
| 5 | Dn.sob+blag.+kuhinja | 23,73 | 1,0 | 23,73 |
| 6 | Natkrivena terasa | 10,75 | 0,5 | 5,38 |
| 7 | Parkirno mjesto 2 | 12,50 | 0,2 | 2,5 |
| | | 79,69 m2 | | 64,32 m2 |