

Z

I. NATKRIVENI ULAZ
 $F_{Pd} = F_{Ko} = 18,57m^2$
 $F_{Ko} = 18,57m \times 0,5 = 9,29m^2$
 ker.plo.

II. HODNIK
 $F_{Pd} = F_{Ko} = 7,38m^2$
 ker.plo.

III. HODNIK ISPOD STUBIŠTA
 1dio(1m>h)
 $F_{Pd} = 2,32m^2$
 $F_{Ko} = 2,32m \times 0,0 = 0,0m^2$
 2dio(1m<h<2m)
 $F_{Pd} = 4,4m^2$
 $F_{Ko} = 4,4m \times 0,75 = 3,3m^2$

3dio(2m<h)
 $F_{Pd} = F_{Ko} = 1,45m^2$
 ker.plo.

IV. LIFT
 $F_{Pd} = F_{Ko} = 3,00m^2$
 ker.plo.

$\sum F_{pd\ neto} = 37,12m^2$

$\sum F_{ko\ neto} = 24,42m^2$

1. KUH.+BLAG.+D.BOR.
 $F_{Pd} = F_{Ko} = 30,25m^2$
 ker.plo.

2. HODNIK
 $F_{Pd} = F_{Ko} = 1,85m^2$
 ker.plo.

3. SP.SOBA 1
 $F_{Pd} = F_{Ko} = 12,15m^2$
 parket

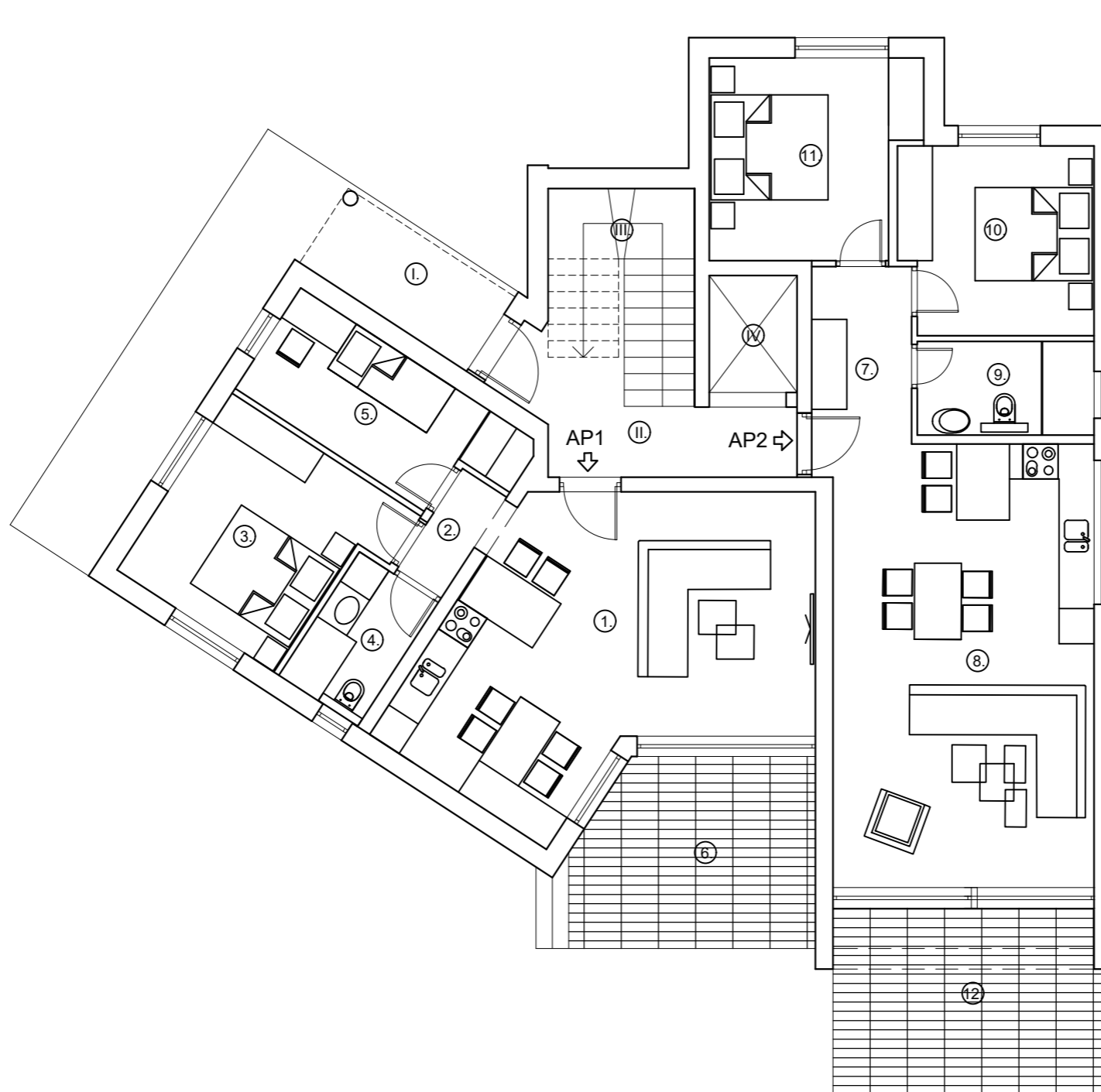
4. KUPAONICA
 $F_{Pd} = F_{Ko} = 4,03m^2$
 ker.plo.

5. SP.SOBA 2
 $F_{Pd} = F_{Ko} = 8,9m^2$
 parket

6. TERASA 1(natkrivena)
 $F_{Pd} = 12,9m^2$
 $F_{Ko} = 12,9m \times 0,5 = 6,45m^2$
 ker.plo.

$\sum F_{pd\ neto} = 70,08m^2$

$\sum F_{ko\ neto} = 63,3m^2$



AP2

7. HODNIK
 $F_{Pd} = F_{Ko} = 5,75m^2$
 ker.plo.

8. KUH.+BLAG.+D.BOR.
 $F_{Pd} = F_{Ko} = 33,21m^2$
 ker.plo.

9. KUPAONICA
 $F_{Pd} = F_{Ko} = 4,82m^2$
 ker.plo.

10. SP.SOBA1
 $F_{Pd} = F_{Ko} = 10,45m^2$
 parket

11. SP.SOBA2
 $F_{Pd} = F_{Ko} = 11,44m^2$
 parket

12. TERASA(natkrivena)
 $F_{Pd} = 14,86m^2$
 $F_{Ko} = 14,86m \times 0,5 = 7,43m^2$
 ker.plo.

$\sum F_{pd\ neto} = 80,53m^2$

$\sum F_{ko\ neto} = 62,65m^2$

AP1