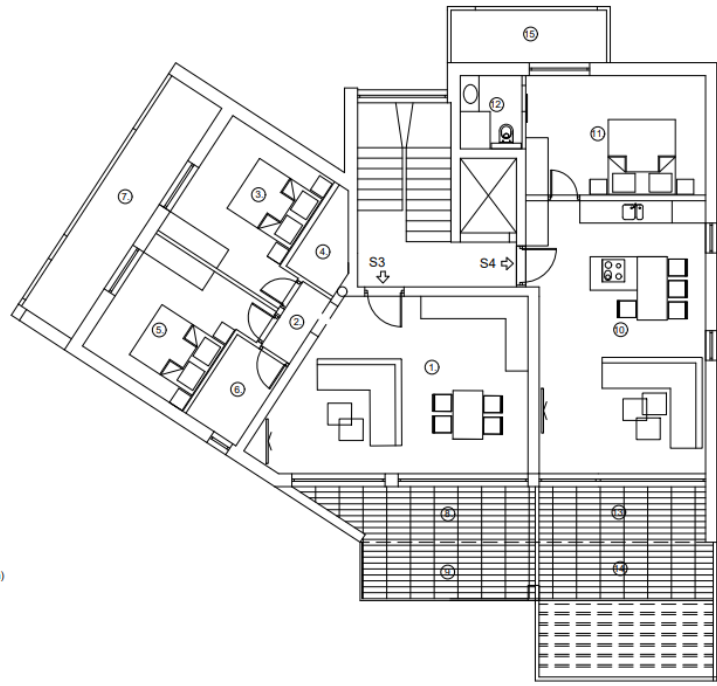


- Z
- I. STUBIŠTE
 $F_{pl} = F_{ko} = 8,29m^2$
 $F_{ko} = 8,29m \times 0,75 = 6,22m^2$
 ker. plo.
 - II. HODNIK
 $F_{pl} = F_{ko} = 6,2m^2$
 ker. plo.
- $\sum F_{pl\ nrb} = 14,49m^2$
 $\sum F_{ko\ nrb} = 12,42m^2$
- S3
- 1. KUH.+BLAG.+D.BOR.
 $F_{pl} = F_{ko} = 30,28m^2$
 ker. plo.
 - 2. HODNIK
 $F_{pl} = F_{ko} = 1,84m^2$
 ker. plo.
 - 3. SP.SOBA1
 $F_{pl} = F_{ko} = 12,5m^2$
 parket
 - 4. KUPAONICA 1
 $F_{pl} = F_{ko} = 2,77m^2$
 ker. plo.
 - 5. SP.SOBA2
 $F_{pl} = F_{ko} = 12,16m^2$
 parket
 - 6. KUPAONICA 2
 $F_{pl} = F_{ko} = 4,04m^2$
 ker. plo.
 - 7. TERASA 1 (natkrivena)
 $F_{pl} = 11,78m^2$
 $F_{ko} = 11,78m \times 0,5 = 5,89m^2$
 ker. plo.
 - 8. TERASA 2dio1 (natkriven)
 $F_{pl} = 8,25m^2$
 $F_{ko} = 8,25m \times 0,5 = 4,12m^2$
 ker. plo.
 - 9. TERASA 2dio2 (nenatkriven)
 $F_{pl} = 7,00m^2$
 $F_{ko} = 7,00m \times 0,25 = 1,75m^2$
 ker. plo.
- $\sum F_{pl\ nrb} = 90,62m^2$
 $\sum F_{ko\ nrb} = 71,31m^2$



- S4
- 10. KUH.+BLAG.+D.BOR.
 $F_{pl} = F_{ko} = 33,41m^2$
 ker. plo.
 - 11. SP.SOBA
 $F_{pl} = F_{ko} = 15,41m^2$
 parket
 - 12. KUPAONICA
 $F_{pl} = F_{ko} = 3,23m^2$
 ker. plo.
 - 13. TERASA 1 dio1 (natkriven)
 $F_{pl} = 6,64m^2$
 $F_{ko} = 6,64m \times 0,5 = 3,32m^2$
 ker. plo.
 - 14. TERASA 1 dio2 (nenatkriven)
 $F_{pl} = 7,04m^2$
 $F_{ko} = 7,04m \times 0,25 = 1,76m^2$
 ker. plo.
 - 15. TERASA 2 (natkrivena)
 $F_{pl} = 5,84m^2$
 $F_{ko} = 5,84m \times 0,5 = 2,92m^2$
 ker. plo.
- $\sum F_{pl\ nrb} = 71,57m^2$
 $\sum F_{ko\ nrb} = 60,05m^2$