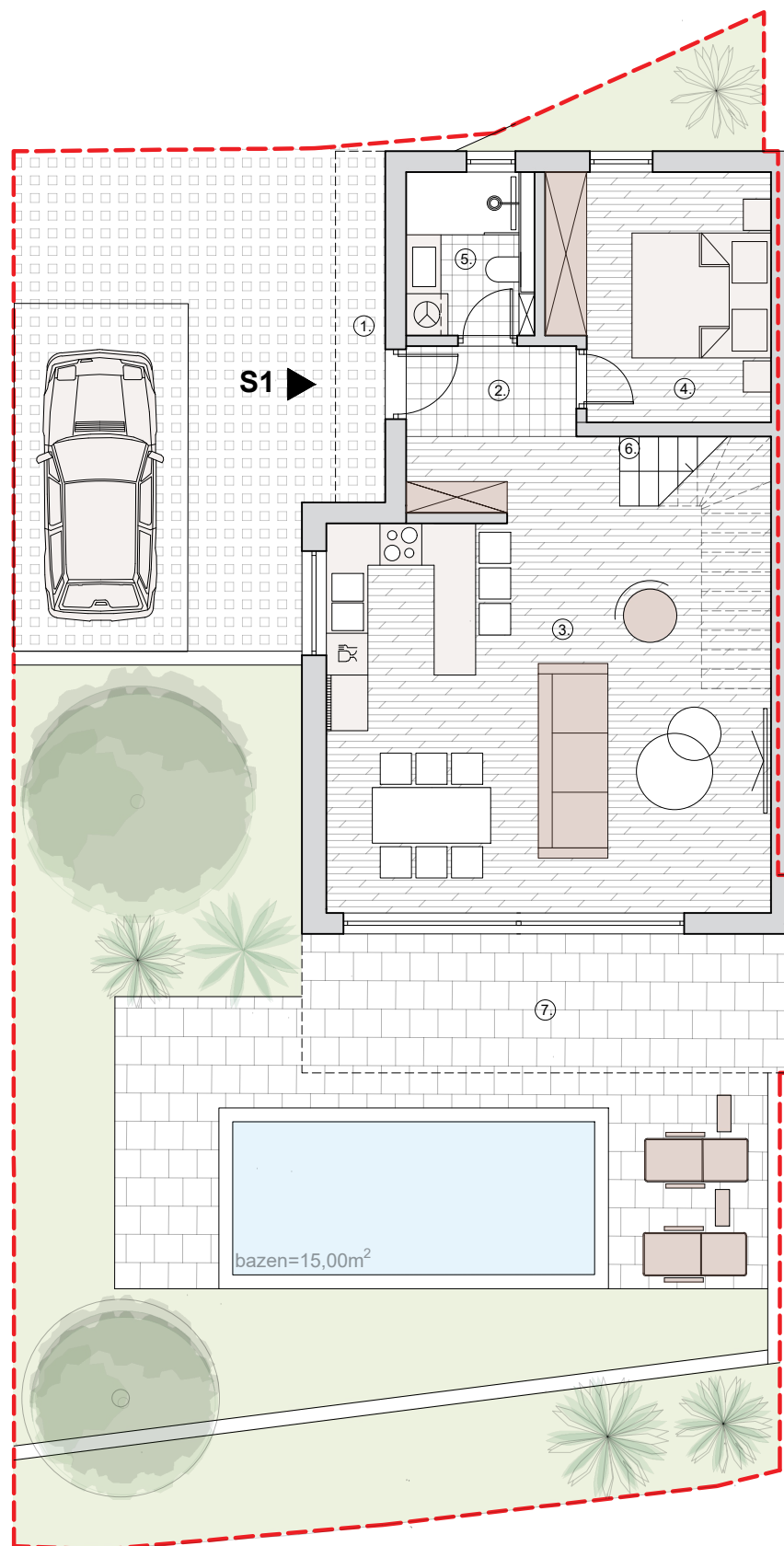
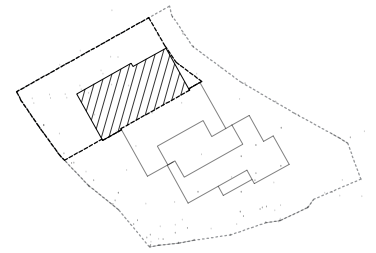


S1

prizemlje



1. **ulaz (natkriven)**
3,58m²x0,5=1,79m²
2. **ulazni prostor**
3,18m²
3. **kuhinja+blagovaonica+
dnevni boravak**
42,65m²
4. **spavaća soba 1**
10,79m²
5. **kupaonica 1**
4,13m²
6. **stubište**
4,83m²x0,75=3,62m²
7. **terasa (natkrivena)**
14,20m²x0,5=7,10m²

UKUPNO PRIZEMLJE: 73,26 m²

0

2

4

10

